

TVB-5605

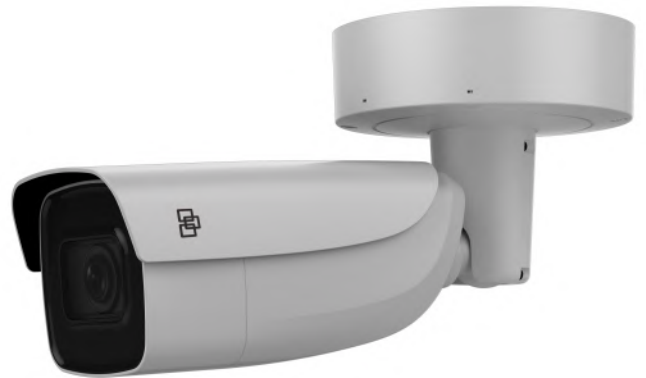
TruVision 4MPx, H.265/H.264, IP VF Bullet Camera, 2.8 to 12 mm motorized, True D/N, WDR, 50m IR, Audio, I/Os, Micro SD/SDHC/SDXC Slot, PoE+ (802.3-at)/12VDC, IP67, IK10

Overview

The TruVision Series 6 line of IP bullet cameras leverages the latest H.265 video compression technology to bring state-of-the-art, high-definition pictures to the mass video surveillance market. With video resolutions from 2 megapixel to 4K, these IP cameras represent a flexible video surveillance device to meet any need. Equipped with advanced technology and signal processing capability, they effectively capture video under challenging conditions.

TruVision cameras utilize H.265 and/or H.264 compression technology with triple-streaming capability, making it easy to manage the camera's bandwidth usage. Motorized varifocal lens technology allows the user to remotely adjust the varifocal lens and focus the camera with the touch of a button. Recording to a local MicroSD card (not included) protects data in the event of network disruptions.

These cameras go above and beyond standard motion detection with enhanced alarm capabilities, including cross line detection, intrusion detection and face detection features. Each is user-configurable to best suit the installation environment. A Region of Interest function (ROI) ensures specific portions of an image are given priority during instances of high network traffic or network degradation.



Details

- Maximum Resolution: 2560 x 1440
- H.265 and/or H.264 compression with triple-streaming functionality
- Motorized zoom lens 2.8 to 12 mm
- Motorised IR Cut Filter
- ONVIF Profile G and S open standards
- Edge recording up to 256 GB SDHC card
- Up to 50 m IR illumination
- Up to 120 dB Wide Dynamic Range
- Video intelligence: face detection, intrusion detection, cross line detection

TVB-5605

TruVision 4MPx, H.265/H.264, IP VF Bullet Camera, 2.8 to 12 mm motorized, True D/N, WDR, 50m IR, Audio, I/Os, Micro SD/SDHC/SDXC Slot, PoE+ (802.3-at)/12VDC, IP67, IK10

Technical specifications

Camera

Sensor size	1/2.8"
Max. resolution	4 MPX
Sensor scan	Progressive
Sensor type	CMOS
Digital S/N ratio	50 dB (AGC Off)
Shutter time	1/3 to 1/100,000 s

Lighting performance

WDR type	True WDR
WDR	120 dB
Digital noise reduction	3D DNR
Day/night	True Day/Night
Motorized IR cut filter	Yes
Color sensitivity	0.01 Lux @ (F1.2, AGC ON), 0.018 Lux @ (F1.6, AGC ON)
B/W sensitivity	0 lux with IR on
B/W trigger	Auto/Schedule/Triggered by alarm in
Infrared (IR)	Yes
IR range	Up to 50 m

Encoding

Video streams	3
Main stream compression	H.264, H.265
Sub stream compression	H.264, H.265, MJPEG
Third stream compression	H.264, H.265
Video bit rate	32 to 16 Mbps
Main stream resolutions	2304 x 1296, 2560 x 1440, 1920 x 1080 (1080p)
Sub stream resolutions	320 x 240 (QVGA), 640 x 360 (nHD), 640 x 480 (VGA), 704 x 576 (4CIF)
Third stream resolutions	352 x 288 (CIF), 640 x 360 (nHD), 1280 x 720 (XVGA)
Max. resolution @ fps	2560 x 1440 @ 25/30 fps

Lens

Lens type	Varifocal
Focal length	2.8 to 12 mm (horizontal FOV: 98 to 28°, vertical FOV: 51 to 16° diagonal FOV: 115 to 32°)
f-stop	F1.6
Auto focus	Yes
Motorized zoom	Yes

Network

Network interface	RJ-45 10/100 Mbps self-adaptive Ethernet interface
Supported video standards	ONVIF Profile G, ONVIF Profile S
Supported network protocols	802.1x, Bonjour, DDNS, DHCP, DNS, FTP, HTTP, HTTPS, ICMP, IGMP, IPv4, IPv6, NTP, PPPoE, QoS, RTCP, RTP, RTSP, SMTP, SNMP, TCP/IP, UPnP

Audio

Audio compression	G.711A, G.722.1, G.726, MP2L2, PCM
Audio in	1 line in/mic.in
Audio out	1 line out

Alarm I/O

Alarm inputs	1
Alarm outputs	1 (up to 12 VDC, 30 mA)
Alarm I/O connection	Terminal block

Storage

Local storage support	Yes
Local storage type	Built-in Micro SD/SDHC/SDXC card slot
Max. storage capacity	128 GB

Video intelligence

Alarm trigger	HDD error, HDD full, Illegal login, IP address conflict, Motion detection, Network disconnected, Video tampering
ROI	Support 1 fixed region for main stream and sub-stream
Video analytics	Advanced motion detection, Face detection, Intrusion detection, Line crossing detection

General

Technology	IP
Video standard	NTSC, PAL
Display modes	Hallway View, Mirror, ROI (Region Of Interest)
Software compatibility	OnGuard, Prism, TruVision Navigator, TVRmobile, UltraView, Web Browser

Electrical

Operating voltage	12 VDC \pm 25%, terminal block / PoE (802.3at, class 4)
Power consumption	max. 14.5 W @ 12 VDC max. 18 W @ PoE (42.5 to 57.0 V)
Current consumption	1.2 A @ 12 VDC 0.43 to 0.3 A @ PoE

Physical

Physical dimensions	144 x 332 mm 5.7 x 13.1 in.
Net weight	1740 g 3.8 lb.
Colour	Grey
Form Factor	Bullet

Environmental

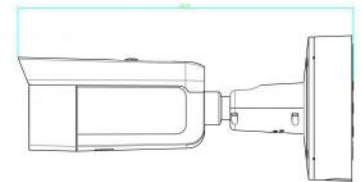
Vandal proof	Yes
Operating temperature	-30 to +60°C -22 to +140°F
Relative humidity	<95% (non-condensing)
Environment	Outdoor
IP rating	IP67
Impact rating	IK10

TVB-5605

TruVision 4MPx, H.265/H.264, IP VF Bullet Camera, 2.8 to 12 mm motorized, True D/N, WDR, 50m IR, Audio, I/Os, Micro SD/SDHC/SDXC Slot, PoE+ (802.3-at)/12VDC, IP67, IK10

Regulatory

Compliance	CE, FCC, REACH, RoHS, UL, WEEE
------------	--------------------------------



As a company of innovation, UTC Fire & Security reserves the right to change product specifications without notice. For the latest product specifications, visit UTC Fire & Security online or contact your sales representative.

28 May 2019 - 10:12


engineering co. ltd.

 **United
Technologies**

Climate | Controls | Security